



Farmer and pig industry views on the Pig Welfare Directive

Charles Bourns
Vice Chairman, Copa Cogeca



national pig association



Who are Copa and Cogeca?

Two organisations:

- **Copa – European farmers**
 - Bringing together 57 EU farmers organisations
- **Cogeca – European agri-cooperatives**
 - Bringing together 31 EU agricultural cooperative organisations

Among the biggest and most active interest representation in Brussels.

EU pig herd

- There are 12.8 million sows in the EU
 - Second largest producer in the world behind China



- The EU produces 21.5 million tons of pig meat
- Consumption is 19.7 million tons
- The EU is therefore 109% self-sufficient
- China is a key export market especially for offal

UK sow production



Indoor

- 48% straw based
- 10% part slatted
- 2% fully slatted



UK sow production cont.

- 40% of UK sows are outdoors
- Radial system or block paddocks

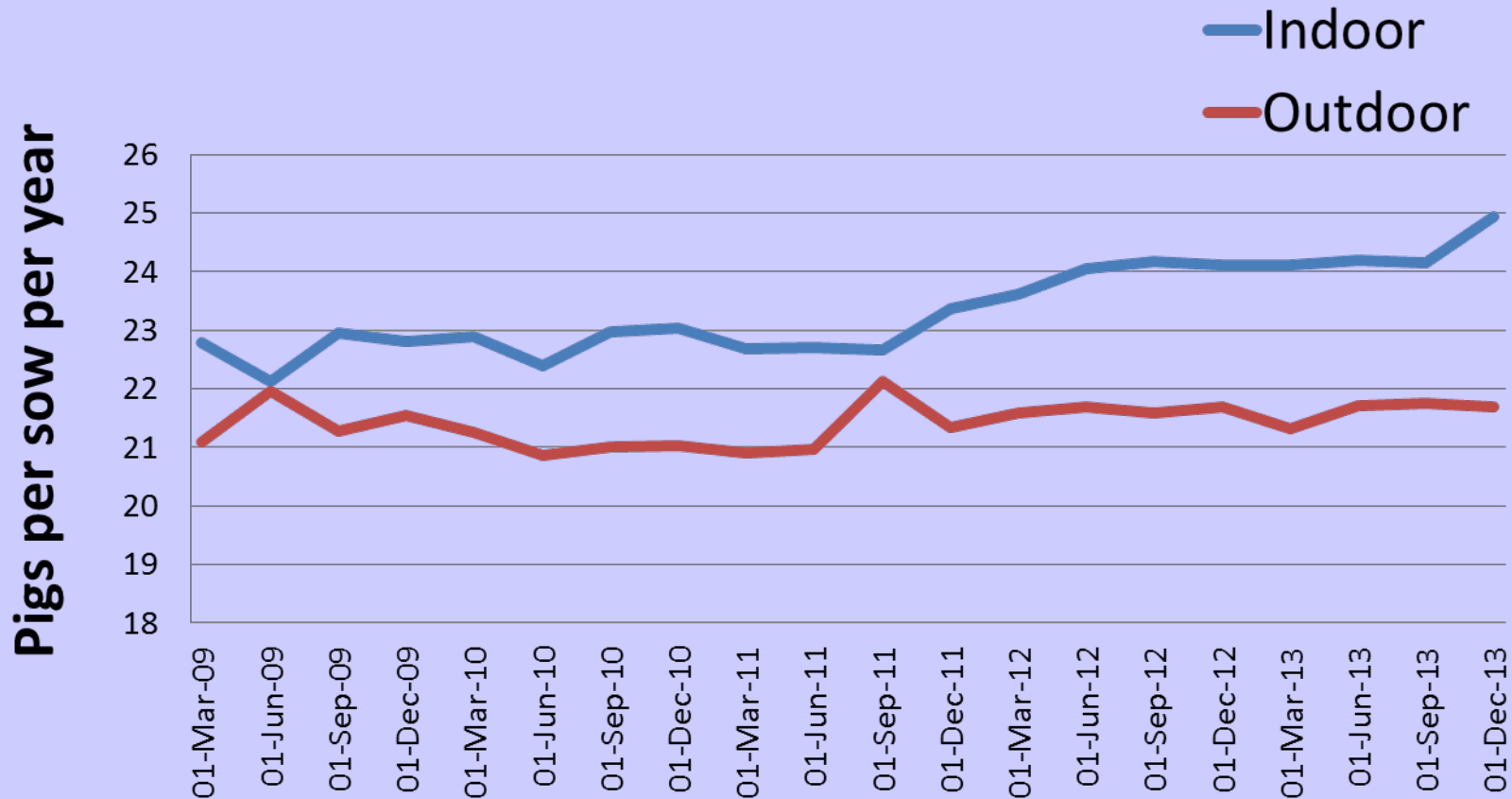


UK Finisher pig production

- 60% straw based
- 13% part solid/slatted
- 25% fully slatted
- 2% free range



UK sow performance

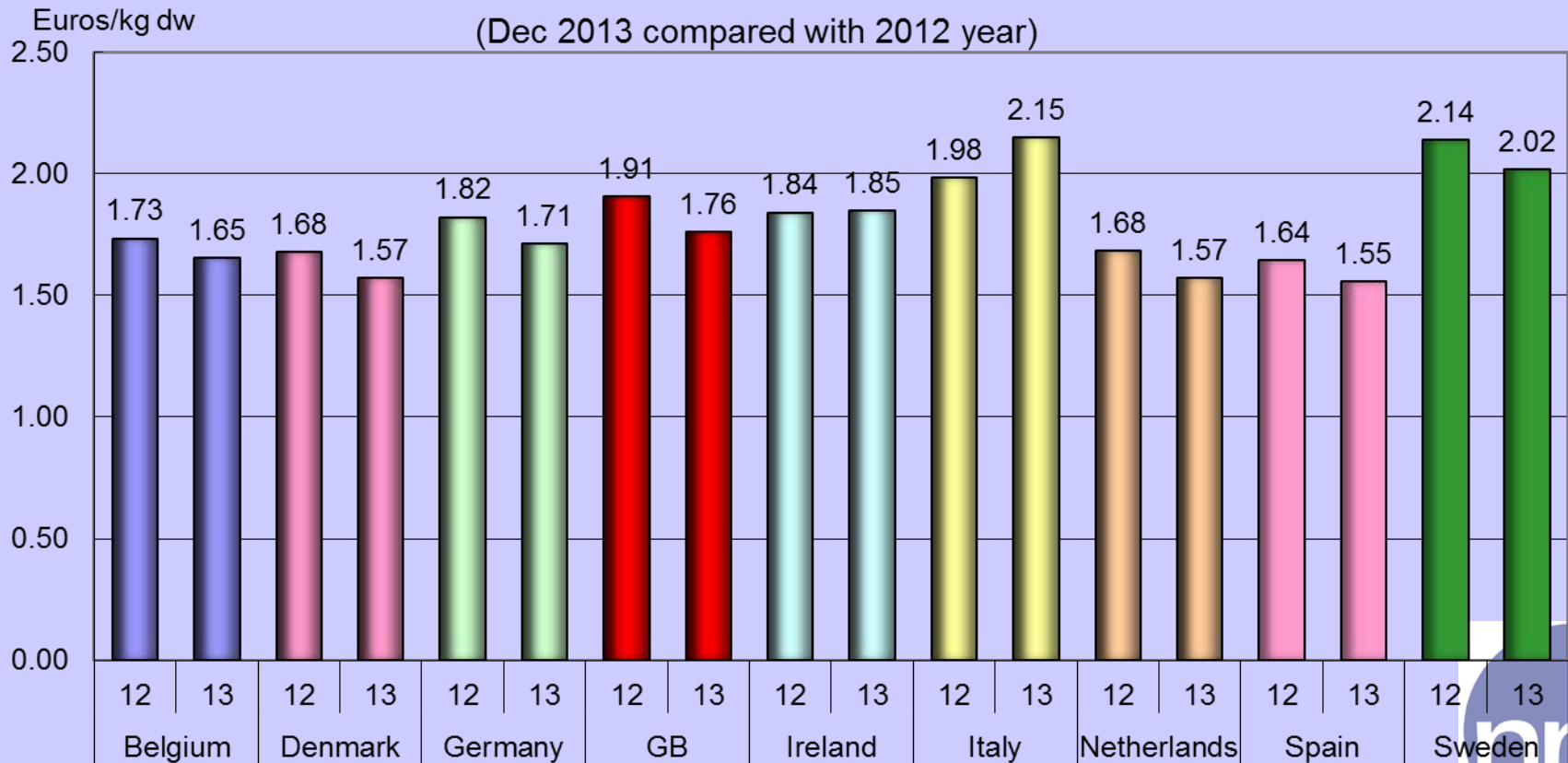


Source BPEX Agrosoft data

Cost of production

CHANGES IN COSTS OF PIG MEAT PRODUCTION

(Dec 2013 compared with 2012 year)



Pig Welfare Directive

1. Sow stalls



- Partial stall ban came into force on 1st Jan 2013
- 18 Member States said they would be compliant - only 10 were
- EU Commission started legal proceedings

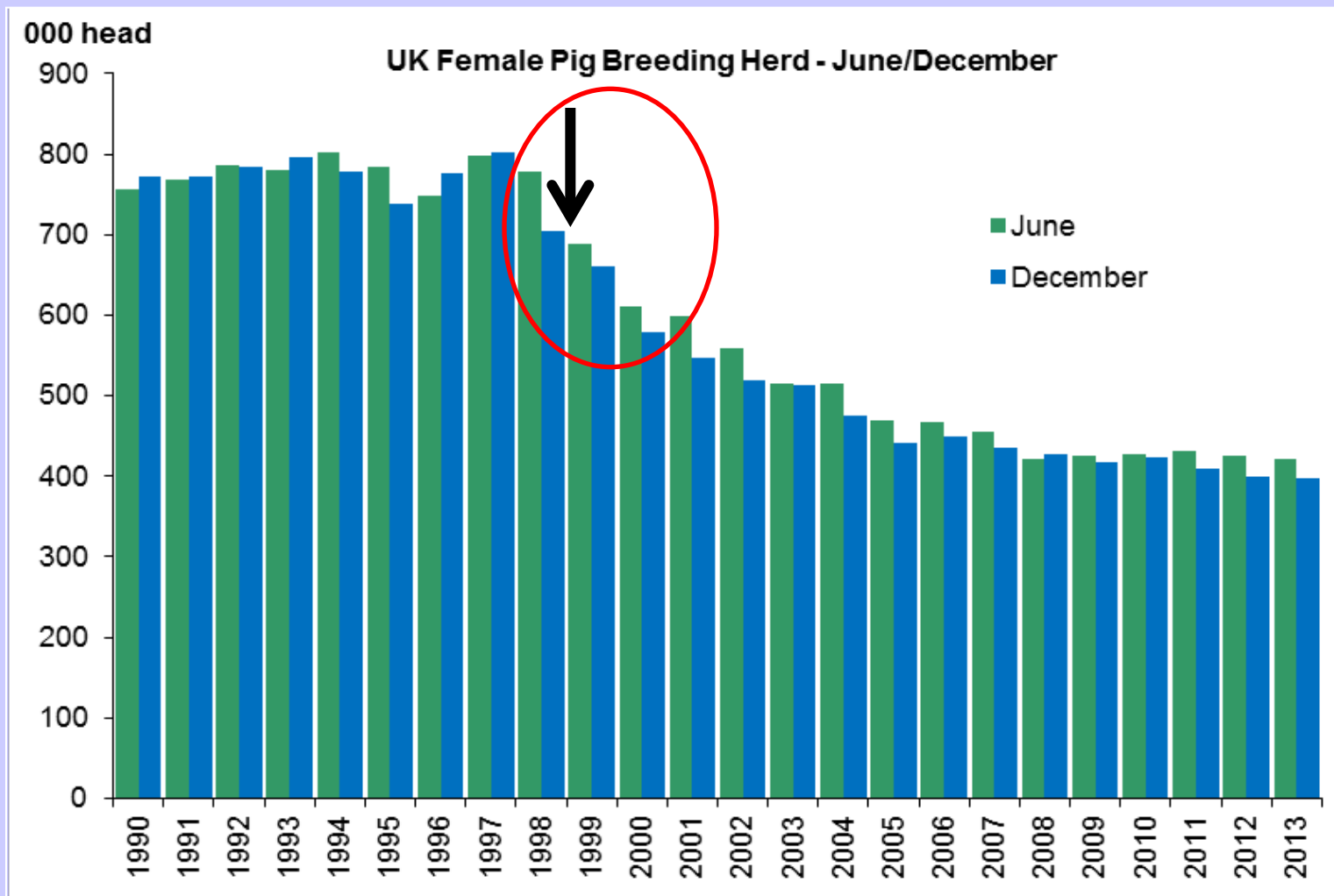
Issues for producers

- **COST**
- Many saw loose housing as a backwards step
- Impact on sow performance
- Demand on services and suppliers



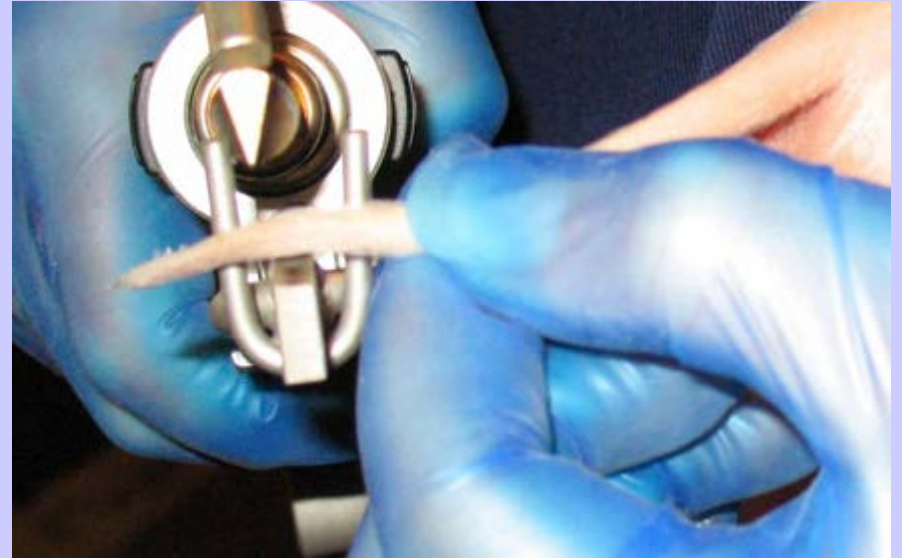
However – do not reward non-compliance to detriment of those that have invested

UK experience



2. Tail docking

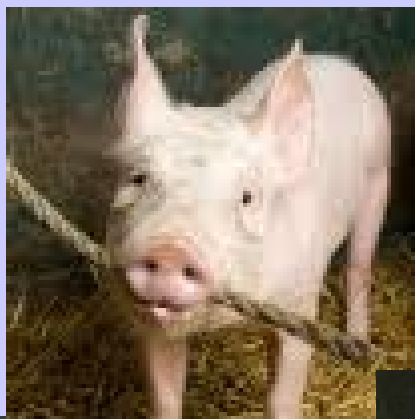
- Why tail dock at all?
- Requires training and time input
- Tail biting is not a simple problem!
- Most farmers have tried alternatives and failed – now they lack confidence
- Many weeks of production can be affected



The consequences are severe



3. Manipulable materials



4. Teeth Reduction

- Again requires training and staff time
- Practised less widely but still seen as an important management tool
- Prevents facial scarring and teat damage
- Grinding vs. clipping debate on-going



The Directive has other provisions



- Slat and slot width
 - Especially finishers on concrete slats
- Minimum pen lengths
- Un-obstructed floor area
- ‘Sufficient’ fibre
- Castration

But we are working on solutions!



Food enrichment-
Nina Taylor 2008

Possible foods to add

Grass
- cut
- turf
- silage



Solid foods:
- beet
- swede
- turnip



Herbal mineral block

Salt licks



hedge trimmings
seaweed
herbs
fruit /vegetables

Objects

Objects are harder to root in, but can be good to chew and manipulate

Wood
Twigs - logs
branches
Christmas trees
heather
railway sleepers
alkathene pipe
Hosepipe layflat/
fire hose







mushroom logs
tough dog chews
ropes
cloth strips
rubber sheets /
curtains








Cube drinkers
Wellies
paper or hessian* bag
cardboard box






Bite rite



* Depends on slurry spreading

Watch for: staples in card and paper, thorns in twigs and branches, chemical treatment of wood sources, naturally poisonous woods.

Scatter in small pieces or whole, or attach to pen sides, put into a rack....

Making sure it happens



Future challenges

- Legislation must be evidence based and applied consistently
- Need to focus on what the pig really needs – not what people think it needs
- A total ban on practices like tail docking would have severe consequences for pig welfare
- The stockman is key to good welfare
- Your understanding and help is vital

Thank you for listening!



Any questions?